

Hotel Hallway Analysis

Weber Analytics
432 North Main Street, Suite 200
Blacksburg, VA 24060

Operator Weber Analytics
Telephone 540.553.6171
Fax
e-Mail service@weberanalytics.com

Table of contents

Hotel Hallway Analysis	
Project Cover	1
Table of contents	2
ZUMTOBEL STAFF LIGHTING S5D7108 7108RC S5; S5D; SPEC-5; FORMED STEE...	
Luminaire Data Sheet	3
OCL ORIGINAL CAST LIGHTING INC - ST. LOUIS, MO IEM-ICS4-10-7-X-2BP-...	
Luminaire Data Sheet	4
Typical of Four (4) Fixtures in Front of Guest Doors	
Summary	5
3D Rendering	6
False Color Rendering	7
Room Surfaces	
Hallway @ 36"	
Isolines (E, Perpendicular)	8
Guest Entry Detail @ 36"	
Isolines (E, Perpendicular)	9
Floor	
Isolines (E)	10

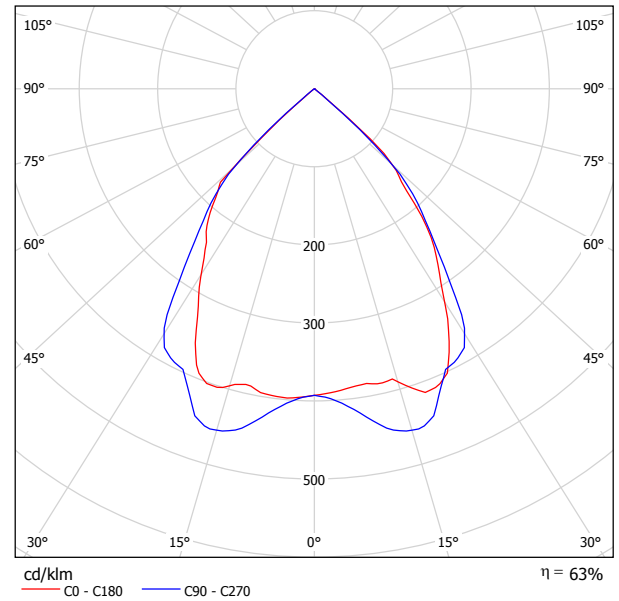
Weber Analytics
432 North Main Street, Suite 200
Blacksburg, VA 24060

Operator Weber Analytics
Telephone 540.553.6171
Fax
e-Mail service@weberanalytics.com

ZUMTOBEL STAFF LIGHTING S5D7108 7108RC S5; S5D; SPEC-5; FORMED STEEL HOUSING, FORMED SPECULAR ALUMINUM NO ENCLOSURE. HORIZONTAL LAMP ORIENTATION. / Luminaire Data Sheet

See our luminaire catalog for an image of the luminaire.

Luminous emittance 1:



Luminaire classification according to CIE: 100
CIE flux code: 84 100 100 100 64

Due to missing symmetry properties, no UGR table can be displayed for this luminaire.

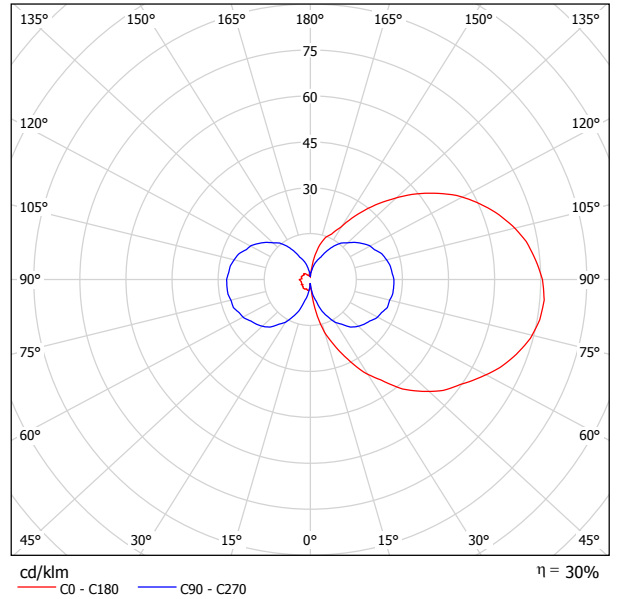
Weber Analytics
432 North Main Street, Suite 200
Blacksburg, VA 24060

Operator Weber Analytics
Telephone 540.553.6171
Fax
e-Mail service@weberanalytics.com

**OCL ORIGINAL CAST LIGHTING INC - ST. LOUIS, MO IEM-ICS4-10-7-X-2BP-1
WATTS=51 REFL=87% UNIVERSAL BALLAST #C2642UNVSE & BODINE EMERGENCY
#B94 / Luminaire Data Sheet**

See our luminaire catalog for an image of the luminaire.

Luminous emittance 1:



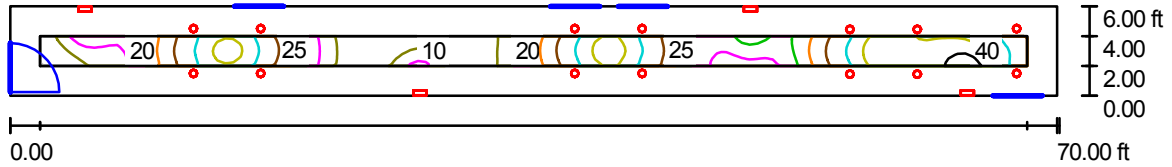
Luminaire classification according to CIE: 54
CIE flux code: 15 40 69 54 30

Due to missing symmetry properties, no UGR table can be displayed for this luminaire.

Weber Analytics
432 North Main Street, Suite 200
Blacksburg, VA 24060

Operator Weber Analytics
Telephone 540.553.6171
Fax
e-Mail service@weberanalytics.com

Typical of Four (4) Fixtures in Front of Guest Doors / Summary



Height of Room: 9.500 ft, Light loss factor: 0.80

Values in Footcandles, Scale 1:153

Surface	ρ [%]	E_{av} [fc]	E_{min} [fc]	E_{max} [fc]	u0
Workplane	/	25	4.94	49	0.198
Floor	10	18	3.14	32	0.177
Ceilings (11)	75	4.07	1.98	7.12	/
Walls (4)	40	9.02	1.59	139	/

Workplane:

Height: 2.500 ft
Grid: 128 x 8 Points
Boundary Zone: 2.001 ft

Illuminance Quotient (according to LG7): Walls / Working Plane: 0.383, Ceiling / Working Plane: 0.163.

Luminaire Parts List

No.	Pieces	Designation (Correction Factor)	Φ (Luminaire) [lm]	Φ (Lamps) [lm]	P [W]
1	4	OCL ORIGINAL CAST LIGHTING INC - ST. LOUIS, MO IEM-ICS4-10-7-X-2BP-1 WATTS=51 REFL=87% UNIVERSAL BALLAST #C2642UNVSE & BODINE EMERGENCY #B94 (1.000)	1094	3600	51.0
2	14	ZUMTOBEL STAFF LIGHTING S5D4312S1 4311RC S5; S5D; SPEC-5; FORMED STEEL HOUSING, FORMED SPECULAR ALUMINUM REFLECTOR, NO ENCLOSURE. VERTICAL LAMP ORIENTATION. (1.800)	564	1250	18.0
Total:			12269	31900	456.0

Specific connected load: 1.09 W/sq ft = 0.44 W/sq ft/10 fc (Ground area: 420.01 sq ft)

Weber Analytics
432 North Main Street, Suite 200
Blacksburg, VA 24060

Operator Weber Analytics
Telephone 540.553.6171
Fax
e-Mail service@weberanalytics.com

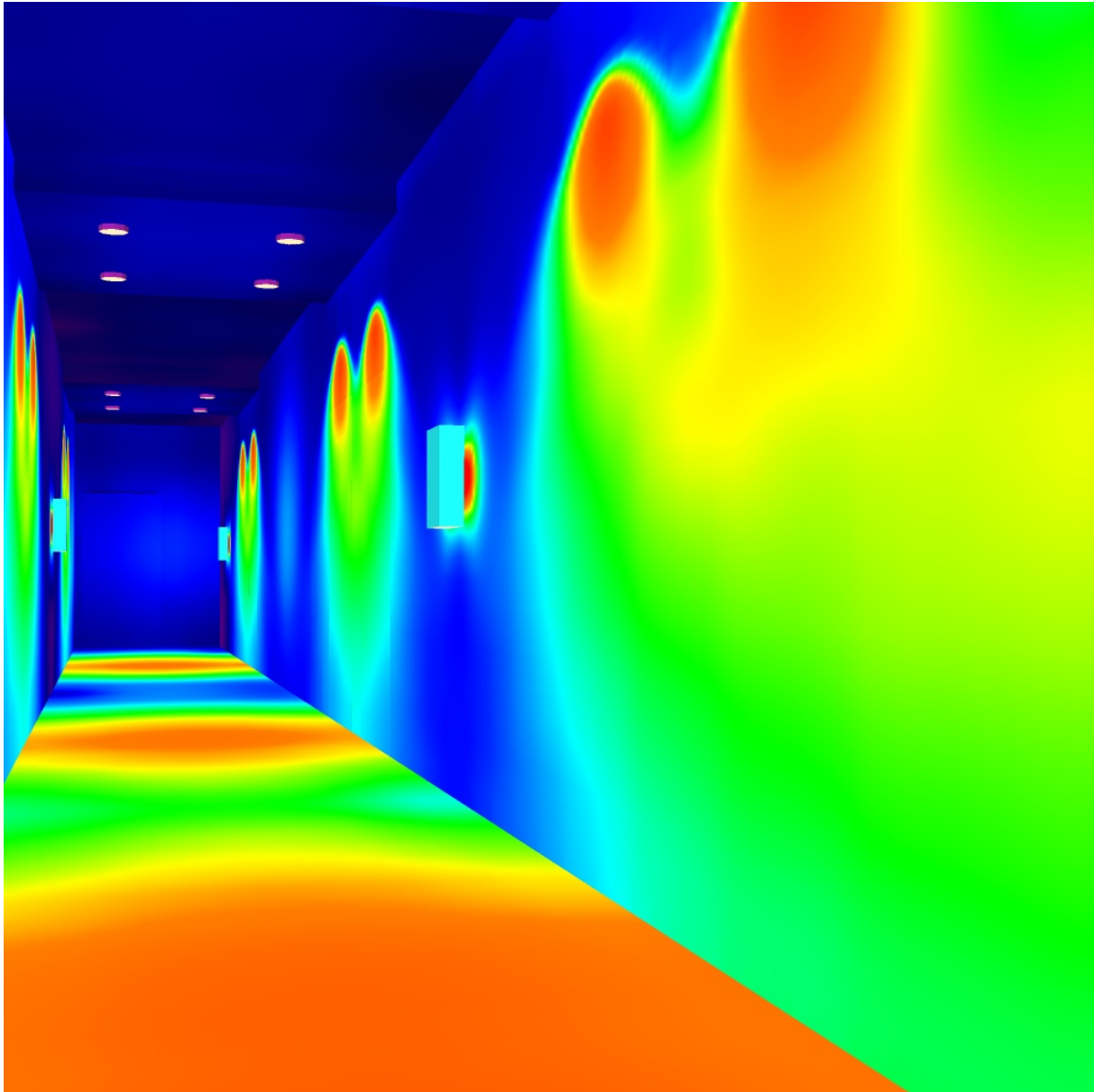
Typical of Four (4) Fixtures in Front of Guest Doors / 3D Rendering



Weber Analytics
432 North Main Street, Suite 200
Blacksburg, VA 24060

Operator Weber Analytics
Telephone 540.553.6171
Fax
e-Mail service@weberanalytics.com

Typical of Four (4) Fixtures in Front of Guest Doors / False Color Rendering

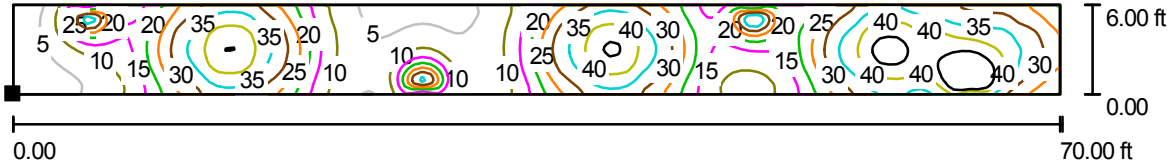


0 1.00 3.00 5.00 10.00 15.00 20.00 25.00 50.00 fc

Weber Analytics
 432 North Main Street, Suite 200
 Blacksburg, VA 24060

Operator Weber Analytics
 Telephone 540.553.6171
 Fax
 e-Mail service@weberanalytics.com

Typical of Four (4) Fixtures in Front of Guest Doors / Hallway @ 36" / Isolines (E, Perpendicular)



Values in Footcandles, Scale 1 : 153

Position of surface in room:
 Marked point:
 (0.000 ft, 0.000 ft, 3.000 ft)



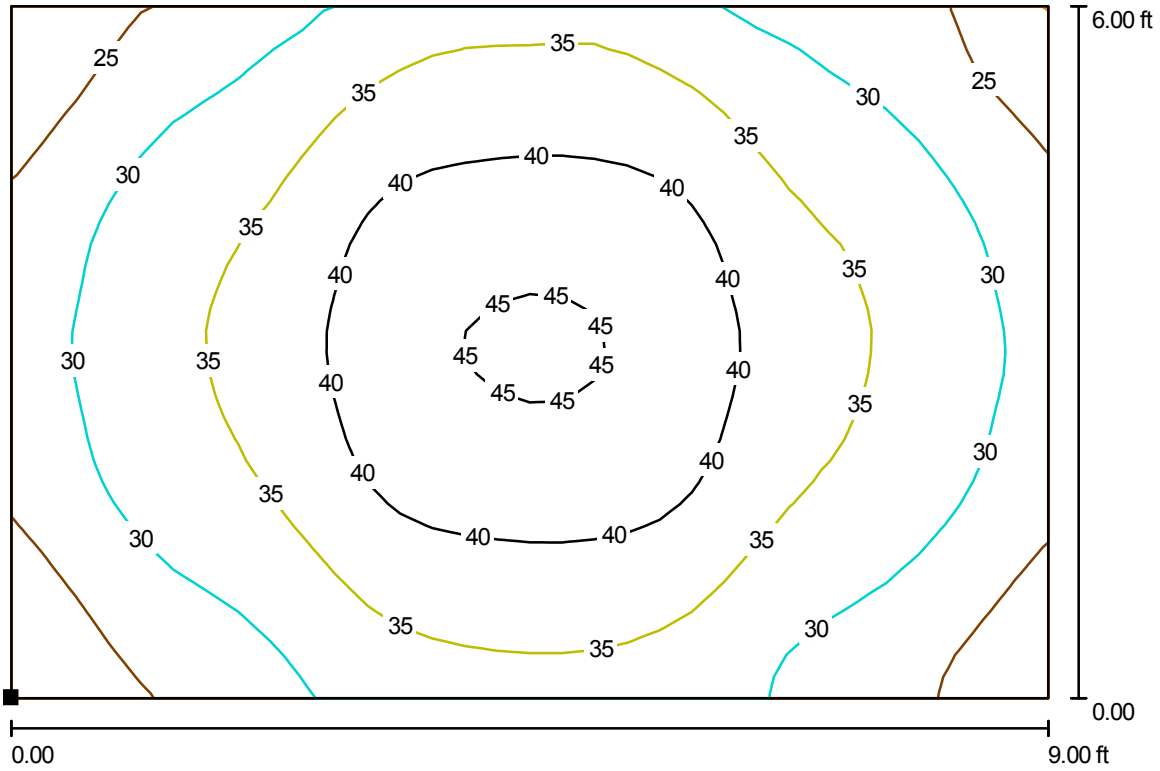
Grid: 128 x 32 Points

E_{av} [fc]	E_{min} [fc]	E_{max} [fc]	u_0	E_{min} / E_{max}
24	2.70	66	0.114	0.041

Weber Analytics
 432 North Main Street, Suite 200
 Blacksburg, VA 24060

Operator Weber Analytics
 Telephone 540.553.6171
 Fax
 e-Mail service@weberanalytics.com

Typical of Four (4) Fixtures in Front of Guest Doors / Guest Entry Detail @ 36" / Isolines (E, Perpendicular)



Values in Footcandles, Scale 1 : 20

Position of surface in room:
 Marked point:
 (35.500 ft, 0.000 ft, 3.000 ft)



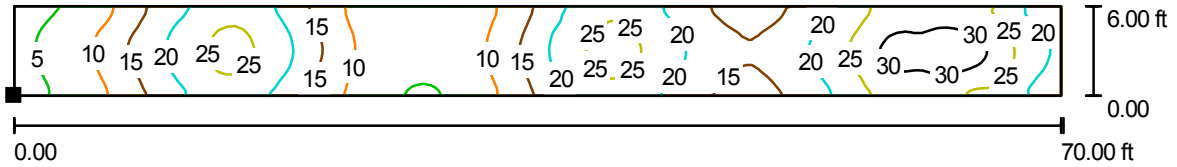
Grid: 32 x 32 Points

E_{av} [fc]	E_{min} [fc]	E_{max} [fc]	u_0	E_{min} / E_{max}
34	20	46	0.598	0.446

Weber Analytics
432 North Main Street, Suite 200
Blacksburg, VA 24060

Operator Weber Analytics
Telephone 540.553.6171
Fax
e-Mail service@weberanalytics.com

Typical of Four (4) Fixtures in Front of Guest Doors / Floor / Isolines (E)



Values in Footcandles, Scale 1 : 153

Position of surface in room:
Marked point:
(0.000 ft, 0.000 ft, 0.000 ft)



Grid: 128 x 32 Points

E_{av} [fc]	E_{min} [fc]	E_{max} [fc]	u0	E_{min} / E_{max}
18	3.14	32	0.177	0.097